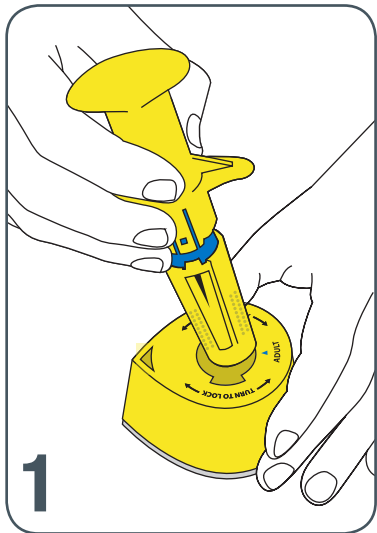
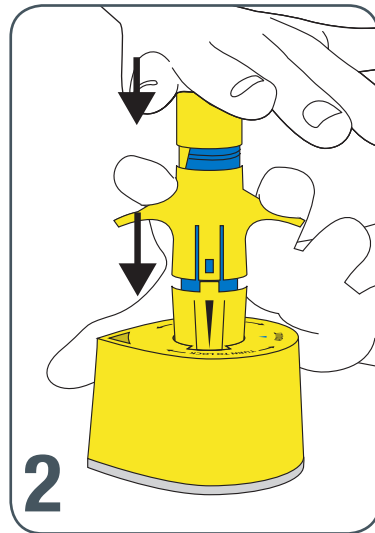


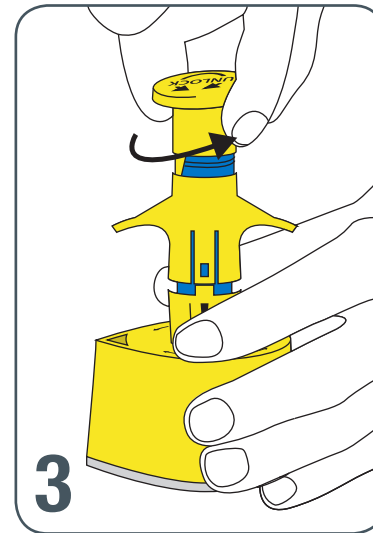
NIO SIMULATION ADULT RELOADING



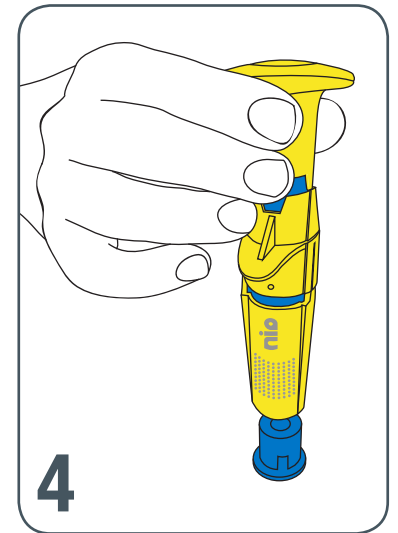
1
Place NIO-SIM-A onto stem of reloading base. Align textured dots with arrow on reloading base.



2
Push down on device until it is completely compressed onto reloading base. While maintaining downward pressure, use other hand to push trigger wings down until a “click” is heard.



3
With NIO-SIM-A still in stabilizer base, turn safety cap 90° to lock safety cap.



4
Place stabilizer base on a flat surface. Connect NIO-SIM-A by placing device on top of stabilizer base.